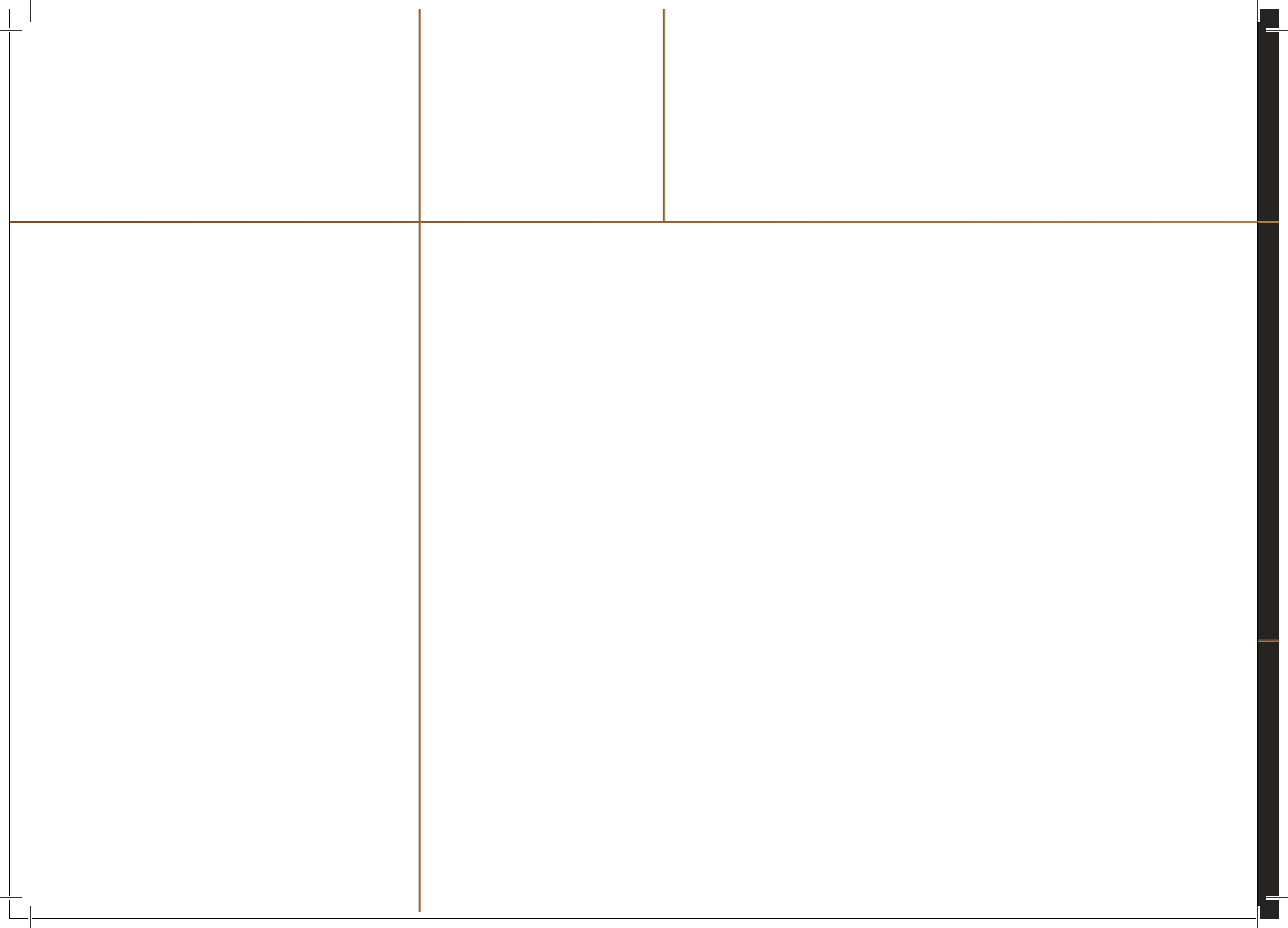


élite

NEW COLLECTION

120x60cm | 80x80cm | 60x60cm



INDEX

120 X 60 cm	14
80 X 80 cm	30
60 X 60 cm	42

The Johnson Marbonite range enjoys the reputation of having become a generic name for Vitrified Tiles. It offers a wide range in large formats for application in homes, offices, hotels, shopping malls and airports.

The Marbonite range is brought to you by H&R Johnson (India), India's leading lifestyle solution provider since 1958. Not only are we the oldest tile manufacturing company in India, we have been the pioneers behind most of the innovations in tiles in India like germ free tiles, stain and scratch free tiles, large format tiles, anti static tiles, cool roof tiles and many more such innovative products.

Marbonite was the first to introduce large format slabs in Italian marble and other popular themes and high quality that is the result of

- Using the finest quality of raw materials and ingredients
- Employing the most modern technology, equipment's and in-house R&D
- Variety of designs and shades to suit individual preferences
- Continuous research in interior designing and Architectural themes
- Authentic shades and patterns to complement your project themes

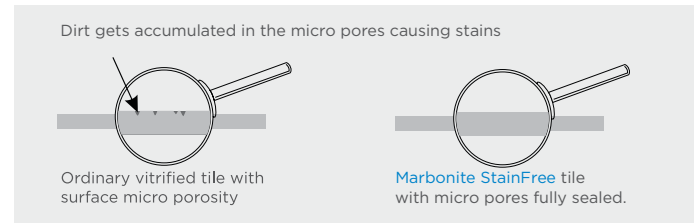
The marvel of modern vitrification technology, the Johnson Marbonite range is superior to its natural counterparts both aesthetically and functionally. Not only are they easier to install, but also are easier to maintain and don't need re-polishing for many years unlike natural marble. What's more the Marbonite double charge range comes with the StainFree property that makes them easier to maintain and looking fresh for years.

Presented here is the Johnson Marbonite Elite Collection. This collection has been elegantly designed to become an intrinsic part of the contemporary Indian's lifestyle definition. The spaces that each one of us takes pride in, are further enhanced with these stylish and graceful tiles. It is our endeavour to transform every living space with inspiring designs, cutting-edge technology while also promoting lifestyles that are cultured, classy and healthy. So, spoil yourself with the wide range of sophisticated themes and high-quality products that present to you a lifestyle par excellence.

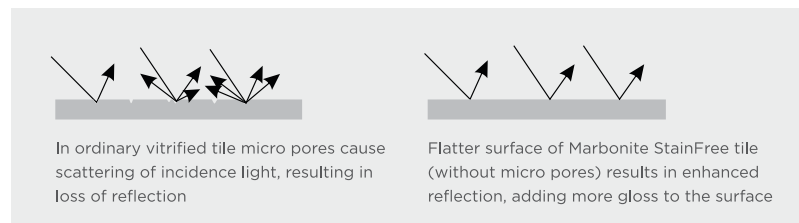
Available in 5 large format sizes of 160X80, 120X120 cm, 120X80 cm, 120X60 cm, 80X80 cm as well as in the standard 60X60 cm size. The large formats help to reduce the number of joints giving a seamless look to the floors, thereby enhancing the aesthetics appeal of your spaces.

WHAT IS STAIN FREE?

Schematic representation of how Marbonite StainFree works.



Schematic representation of enhancement of gloss.



All vitrified tiles have micro pores on their surfaces. In spite of continuous cleaning dirt particles can get accumulated in these pores causing stubborn stains on the surface. The StainFree technology seals the micro pores thus limiting the chances of dirt accumulation and stains and making maintenance easier therefore. Elimination of micro pores also enhances the reflectivity of the tile surface, adding to its lustre.



Frequently Asked Questions

Q.1) What is the life of the Marbonite product range?

A. The superior properties of Marbonite ensure that its wear resistance and scratch resistance A. The superior properties of Marbonite ensures that its wear resistance and scratch resistance are significantly higher than ordinary ceramic floor tiles or natural marbles. Depending upon the usage of the polished surface the life of the Johnson Marbonite tiles range will be much more than the best of Italian marble or granites.

Q.2) Does the design on top of the tile remain forever or does it disappear or fade with use?

A. The Marbonite range is a vitrified tile range. Being a hard material it is virtually impossible for the designs to be removed or fade and hence the designs remain permanent.

Q.3) What about water absorption and hardness levels of the Marbonite range?

A. The Johnson Marbonite tile range has very low water absorption of less than 0.05% which make them highly durable and maintenance free. It hardness levels are almost twice that of natural marble.

Q.4) How is Marbonite Elite better than natural marble?

A. Unlike natural marble, the Marbonite Elite is harder and therefore, way more durable. It's devoid of cracks and fissures. Thanks to the vitrification process, it absorbs very little water compared to natural marble. Moreover, the polish that it comes with weathers for a little or no extent and even discolour minimally. They are even better equipped to withstand scratches and abrasions, compared to natural marble. Making them very easy to maintain. Furthermore, the tiles come pre-polished and pre-sized, making the whole installation process easy that too, with minimum wastage.

Q.5) In which all areas can the Johnson Marbonite Elite range be used?

A. The Johnson Marbonite Elite range has a long-wearing tile surface which makes it ideal for use in most flooring application areas like residences as well as commercial spaces like malls, showrooms, hospitals, hotels and airports. It can also be used for wall applications with the use of recommended tile adhesives and internationally accepted tile fixing practices for wall applications.

Q.6) In what sizes is the Marbonite Elite range available?

A. The Johnson Marbonite Elite collection comes in 5 large format sizes of 160X80 cm, 120X120 cm, 120X80 cm, 120X60 cm, 80X80 cm as well as in the standard 60X60 cm size. The large formats help to reduce the number of joints giving a seamless look to the floors, thereby enhancing the aesthetics appeal of your spaces.

Q.7) Can Johnson Marbonite range be fixed on existing floors?

A. Yes it can be used on existing floors using synthetic tile fixing adhesives from brands like Ardex Endura.

Q.8) How is the Johnson Marbonite Elite collection better than similar products of competition?

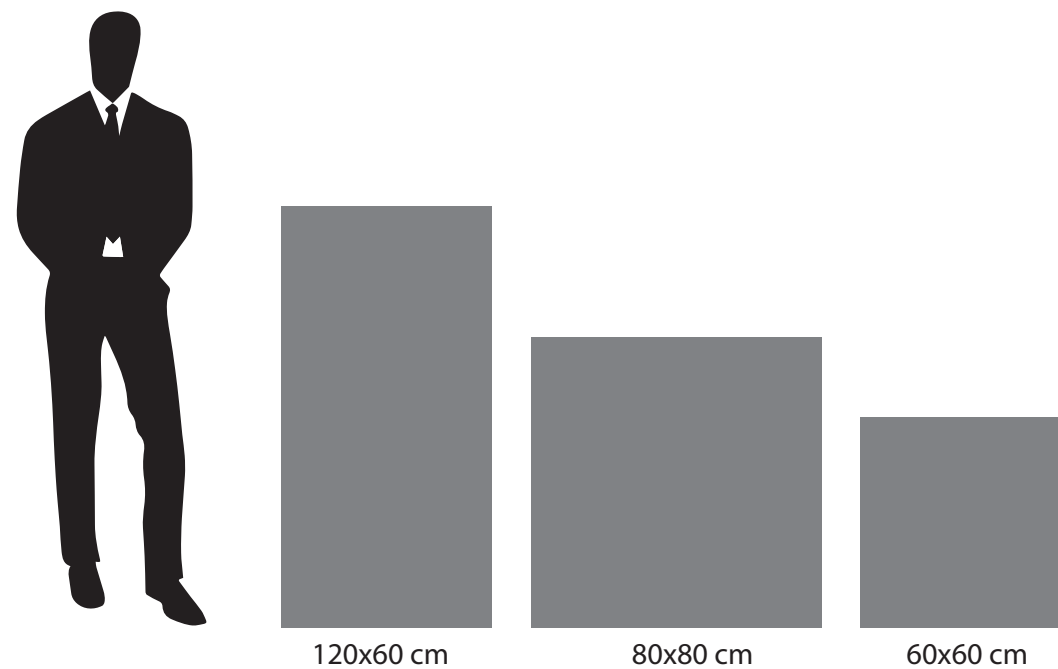
A. Johnson Marbonite is the pioneering and most well known brand of vitrified tiles in India. These tiles are made using the superior quality of raw materials, using the most modern technologies & manufacturing process as well as deployment of strict quality controls. Our continuous research in interior design and architecture practices and association with leading international design houses enables us to offer you the most contemporary portfolio of designs that complement your project themes very well.

Q.9) Can the Johnson Marbonite Elite range be fixed with minimum gap between tiles?

A. We recommend to use spacers while installing these tiles as per internationally accepted standard norms of tile fixing.

Q.10) What precaution and maintenance is required for the Johnson Marbonite Elite range of tiles?

A. While this range offers Stain Free property we recommend that any stains or spills on the tiles be cleaned immediately. We suggest sweeping the floor on a regular basis to remove any trapped-in dirt particles. It is also recommended to keep an effective anti-dust mat near the entrance doors to minimize abrasive substances like sand, dirt etc being brought in through footwear. Other than that the use of a neutral ph detergent or standard tile care product for mopping is enough to keep the tiled floor looking fresh for years.



A journey from tiles to lifestyles - measured in square feet

H&R Johnson (India) is a division of Prism Johnson Limited, one of India's foremost Integrated Building Materials conglomerates.

PRISM JOHNSON LIMITED

(FORMERLY PRISM CEMENT LIMITED)



Established in 1958, Johnson is one of the oldest and trusted brands in the country. Built on the strong and unswerving foundations of quality and innovation, this trust has only grown in these decades gone by; and continues to grow. Starting with tiles, the brand soon diversified into offering lifestyle solutions in the realms of Engineered Marble & Quartz and Bath Solutions. Thereby becoming India's most Integrated Lifestyle Solutions brand. Every product that comes bearing the H&R Johnson insignia is a symbol of the same quality and innovation focused on adding value to the lives of our consumers.

Pioneering Innovations, A Way of Life

At H&R Johnson the term innovation is at the heart of everything we do. That's why it is backed by credible research. Every product attempts to fill in a void left by conventional offerings in the category, in an innovative manner. It's this value we place on cutting-edge innovation that makes us strive for more and eventually delivers more. A quality and a way of working that have redefined consumer lifestyles and expectations.

- Anti-skid & Water-repellent Tiles for Bathrooms
- Rectified Wall Tiles
- Johnson Marbonite - Vitrified Wall and Floor Tiles
- Joint Free Tiles
- Large Format Slabs
- Digitally Printed Wall & Floor Tiles
- Germ Free Tiles & Sanitaryware
- Exterior & Industrial Flooring Solutions

India's Most Integrated Tile Manufacturing Company



Being India's most trusted tiling brand requires that trust to be maintained in every stage of developing each and every product that bears the name of the brand. That's why at H&R Johnson, our Felspar Mines are Self-owned, the soluble salts and inks are manufactured in-house, and even the dies and punches are made in-house. All, so that every step in the process comes with the same quality and assurance, that you expect from us.

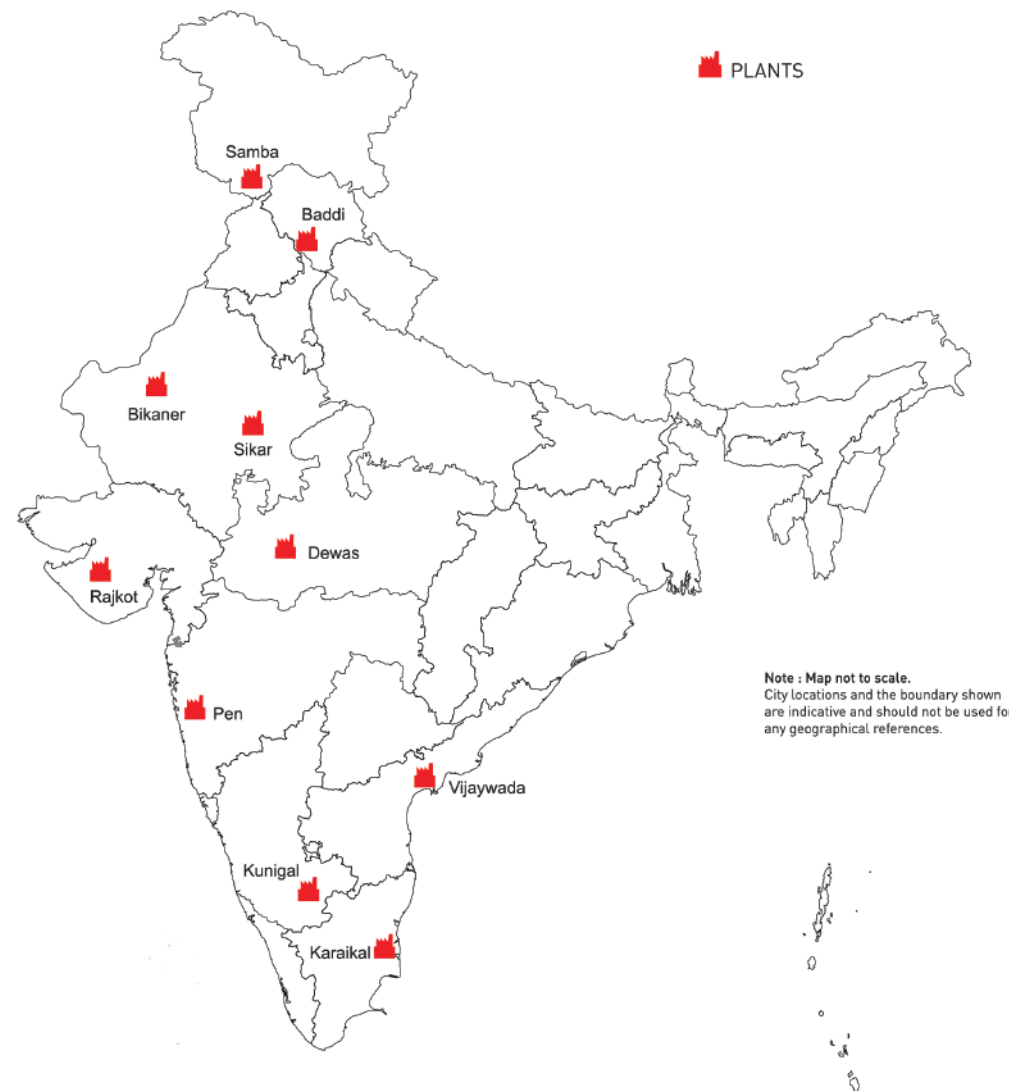
Manufacturing Excellence



Johnson has the most modern manufacturing units across strategic locations in India. Our manufacturing facilities employ the best technology from world leaders in tile manufacturing equipment. All our plants are ISO compliant with both 9001 and 14001 certifications as well as OH SAS 18001 certification.

Our Wide-spread Network

To make sure only the best reach the most, H&R Johnson has over 1,000 exclusive dealers and over 10,000 sub-dealers, spread across 35 branches and many House of Johnson showrooms. More importantly, the brand offers after sales support on your fingertips, with a Pan India customer service.



H & R JOHNSON MANUFACTURING PLANTS IN INDIA

Certifications



Johnson is India's largest tile manufacturer. It's commitment to quality, service and innovation is backed by certification from the world's leading accreditation bodies.

ISO-9001 :2008

For implementing a Quality Management System for the Manufacture and Supply of Ceramic Tiles.

OHSAS-18001

For implementing an Occupational Health & Safety Management System for the Manufacturing of Ceramic Tiles.

ISO-14001

For implementing an Environmental Management system for the Manufacturing of Ceramic Tiles.

Certificate of Merit for Energy Conservation, Bureau of Energy Efficiency, Ministry of Power A Recognition for the efficient use of energy and its conservation.







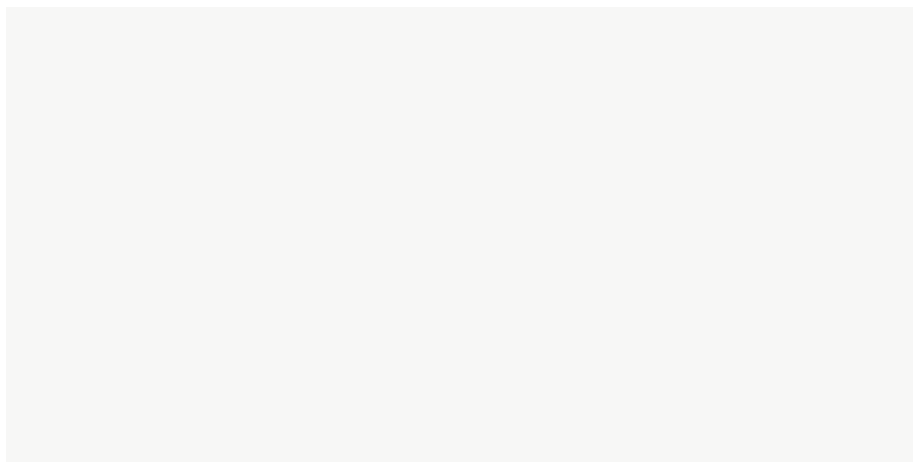
élite

120x60 cm

FULL BODY

120 X 60 cm vitrified tiles

IMPERIAL - SATIN FINISH



IMPERIAL BIANCO



IMPERIAL YELLOW



IMPERIAL ASH GREY



IMPERIAL AZULE



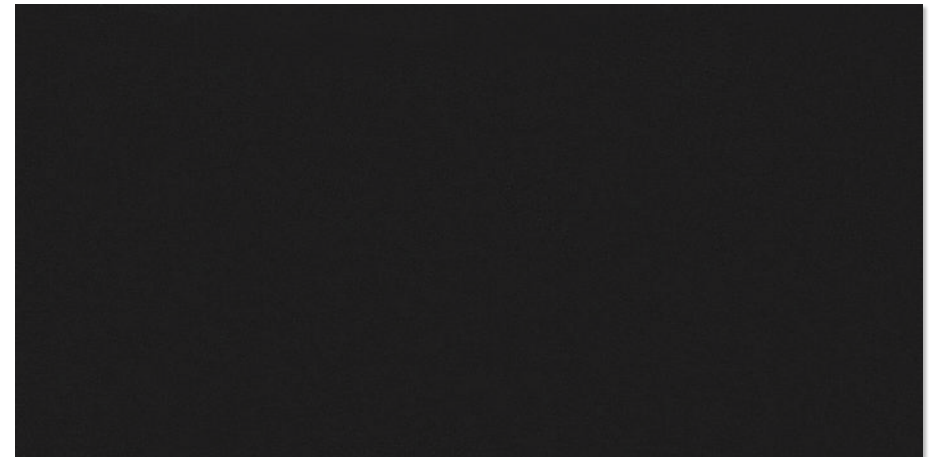
IMPERIAL VERDE



IMPERIAL CHOCO



IMPERIAL DARK GREY



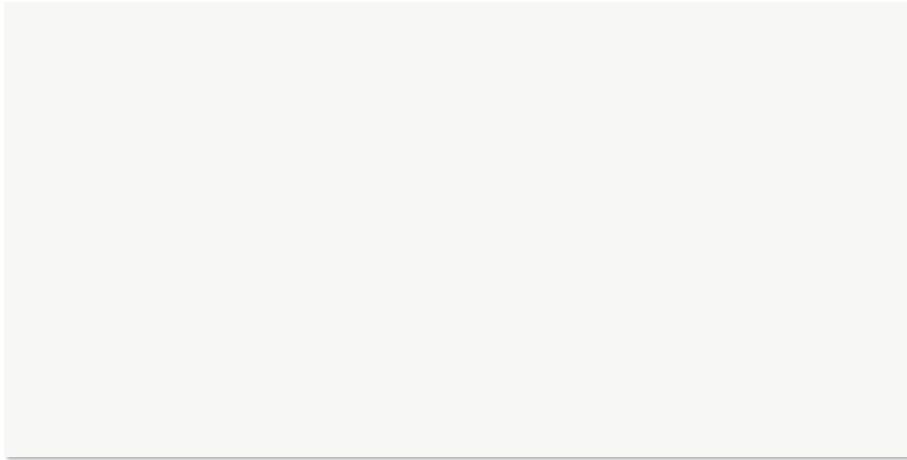
IMPERIAL NERO

FULL BODY
120 X 60 cm vitrified tiles

SCOTTISH - POLISH FINISH



SCOTTISH ASH GREY



SCOTTISH BIANCO



SCOTTISH YELLOW



SCOTTISH ASH GREY



SCOTTISH AZULE

FULL BODY

120 X 60 cm vitrified tiles

SCOTTISH - POLISH FINISH



SCOTTISH VERDE



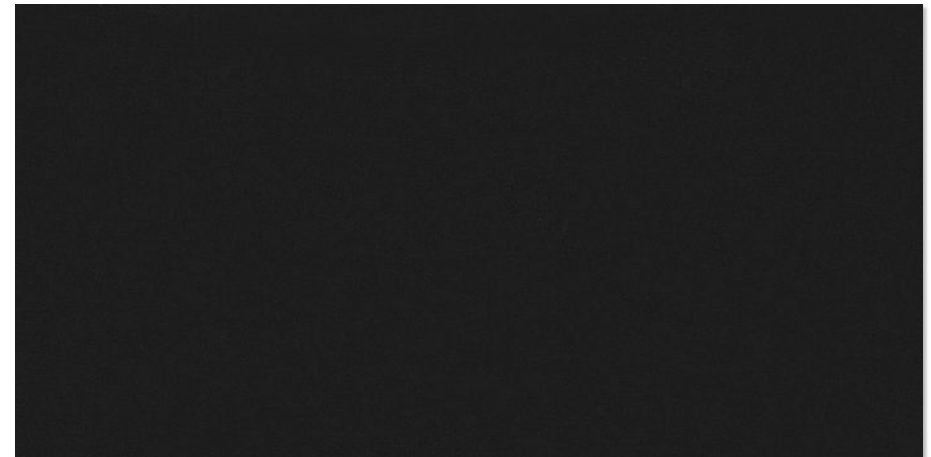
SCOTTISH VERDE



SCOTTISH CHOCO



SCOTTISH DARK GREY



SCOTTISH NERO

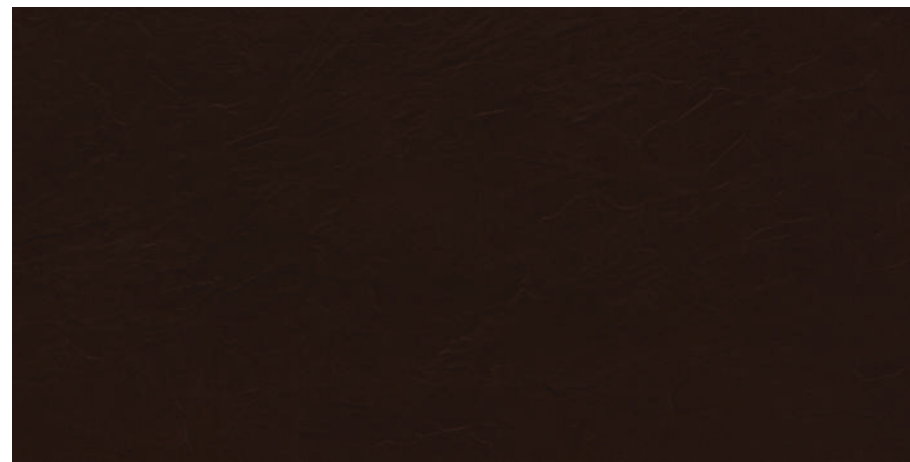
SALT & PEPPER

120 X 60 cm vitrified tiles

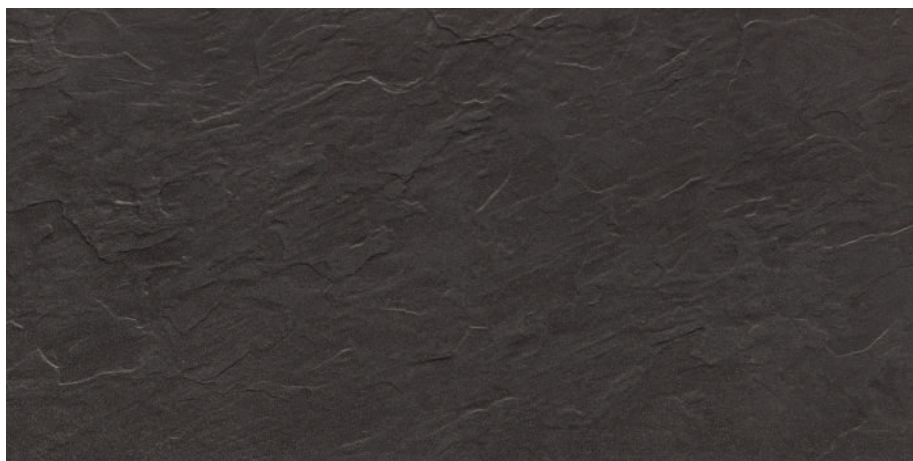
IMPERIAL - SATIN FINISH



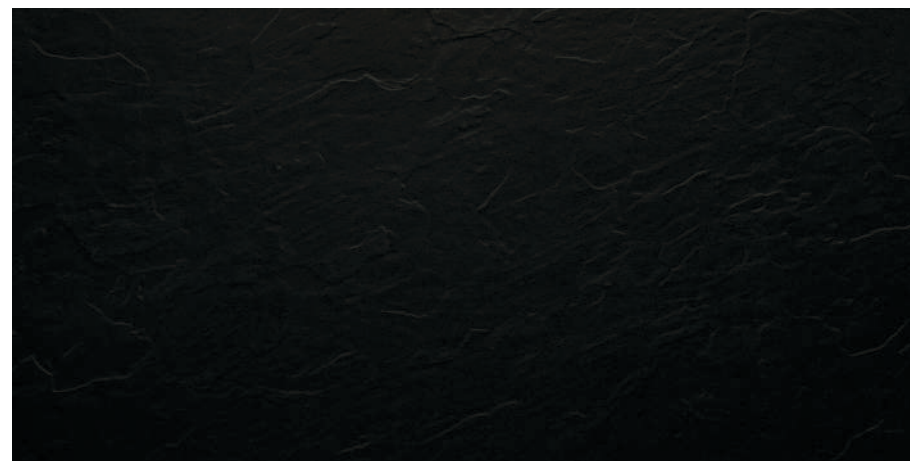
IMPERIAL BIANCO RUSTICO



IMPERIAL CHOCO RUSTICO



IMPERIAL GRIS RUSTICO



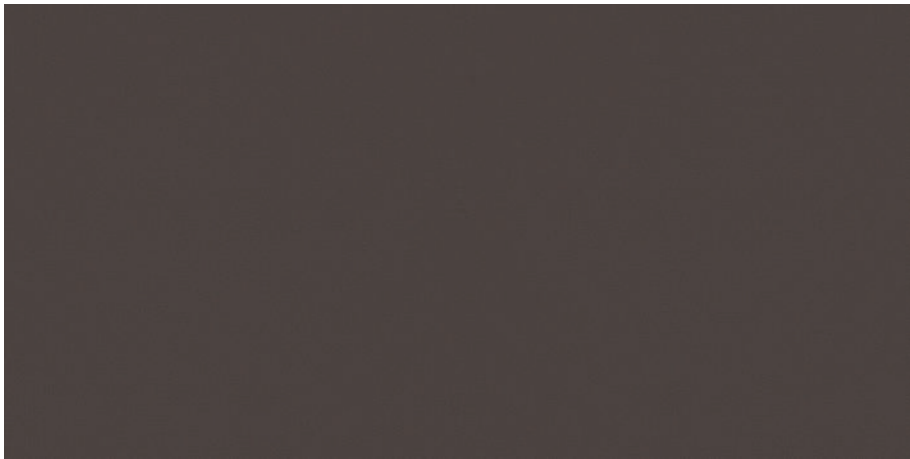
IMPERIAL NERO RUSTICO



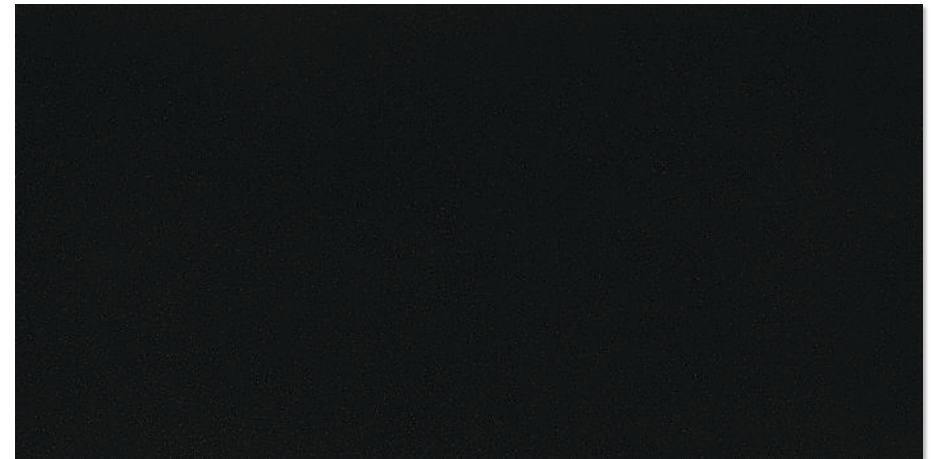
IMPERIAL BIANCO



IMPERIAL CHOCO



IMPERIAL GRIS



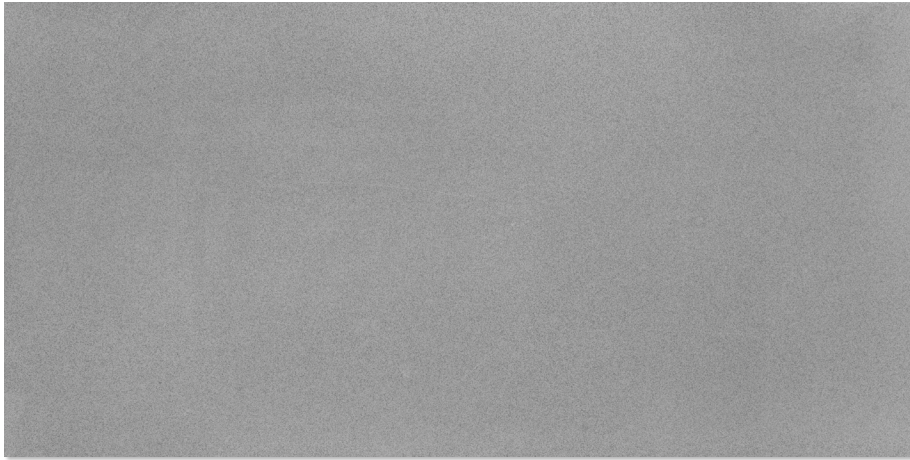
IMPERIAL NERO

SALT & PEPPER
120 X 60 cm vitrified tiles

IMPERIAL - SATIN FINISH
SCOTTISH - POLISH FINISH



SCOTTISH BIANCO



IMPERIAL PLUTO



SCOTTISH CHOCO



SCOTTISH BIANCO



SCOTTISH CARLO

SALT & PEPPER

120 X 60 cm vitrified tiles

SCOTTISH - POLISH FINISH

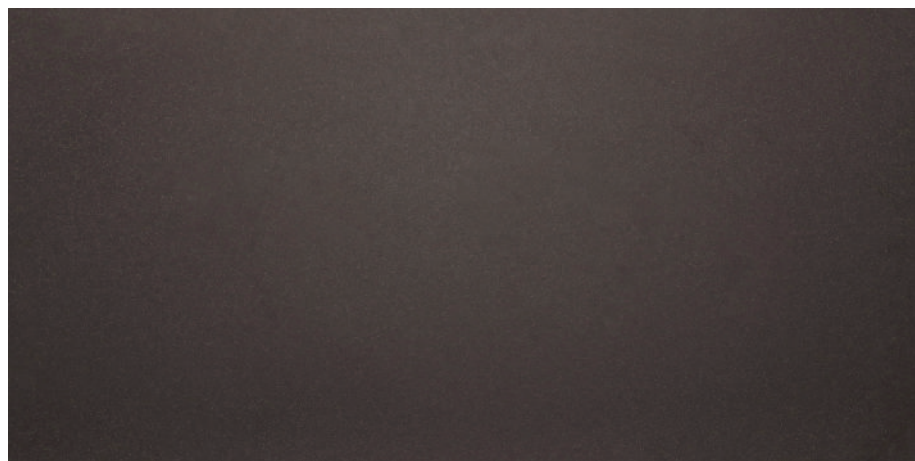
STALLION - SATIN FINISH



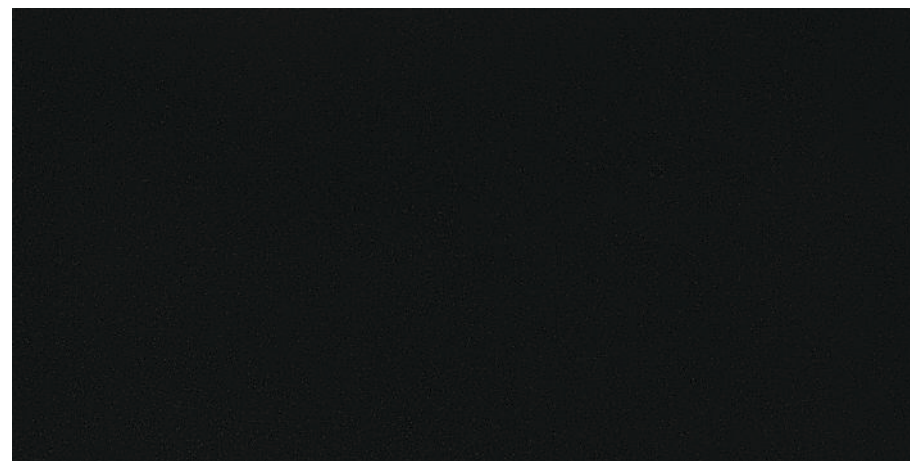
SCOTTISH YELLOW



SCOTTISH PLUTO



SCOTTISH GRIS



SCOTTISH NERO



SCOTTISH GREEN CHILLY



SCOTTISH RED CHILLY



STALLION PLUTO CLOUDY

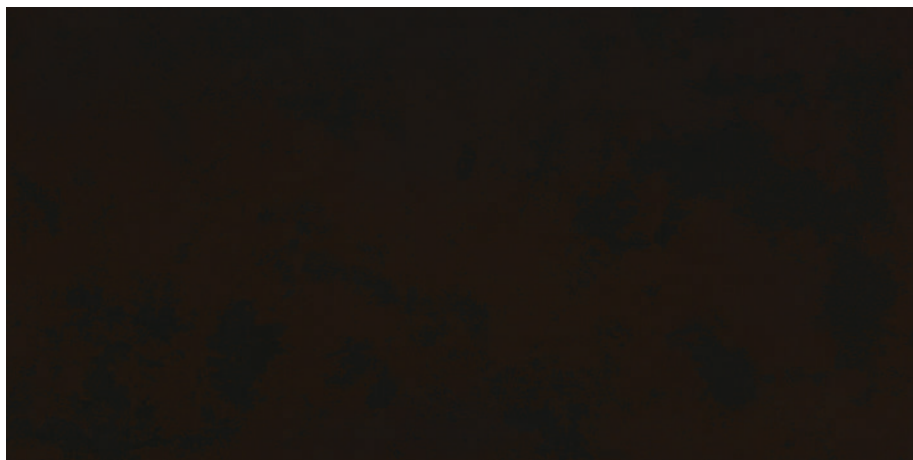


STALLION CARLO CLOUDY

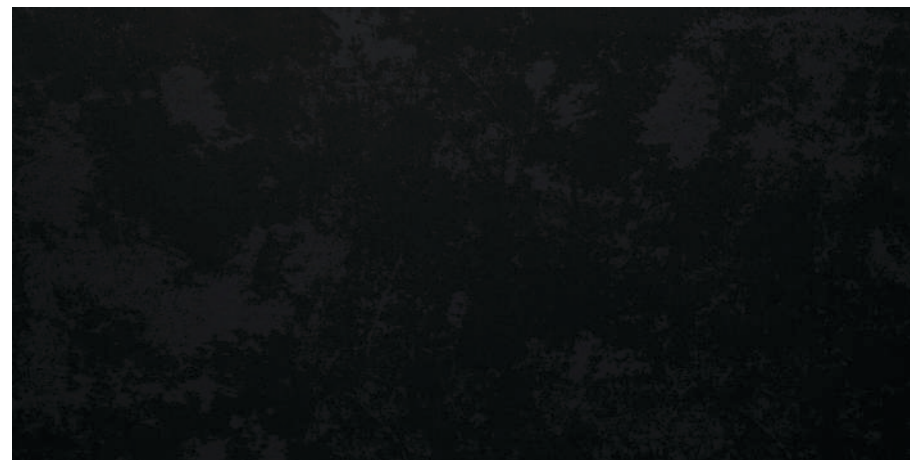
SALT & PEPPER

120 X 60 cm vitrified tiles

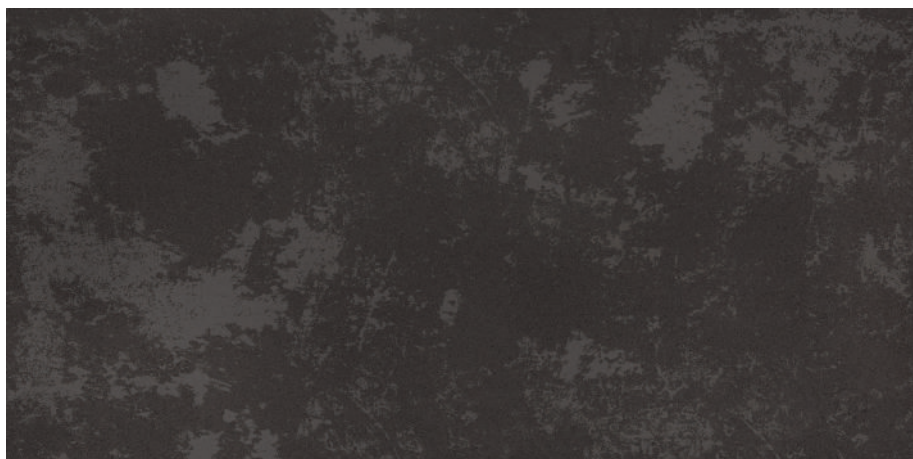
STALLION - SATIN FINISH



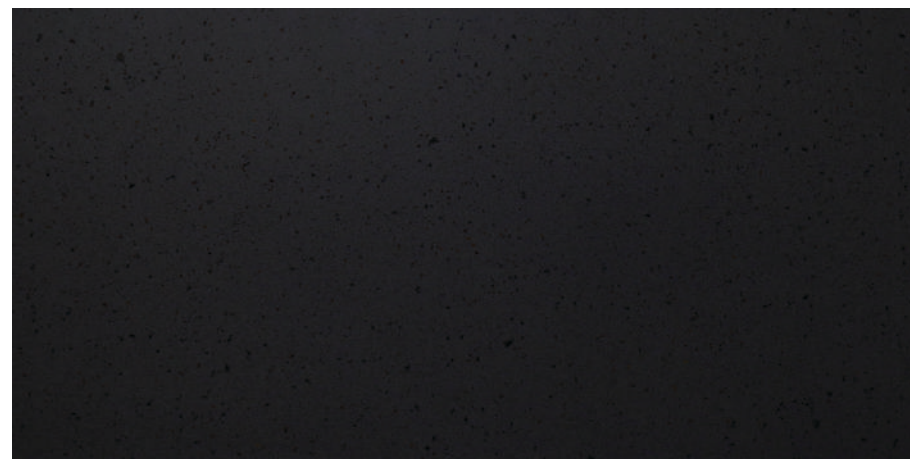
STALLION CHOCO CLOUDY



STALLION NERO CLOUDY



STALLION GRIS CLOUDY



STALLION CARLO CRYSTAL



STALLION PLUTO CRYSTAL



STALLION PLUTO CRYSTAL - RUSTIC





élite

80x80 cm

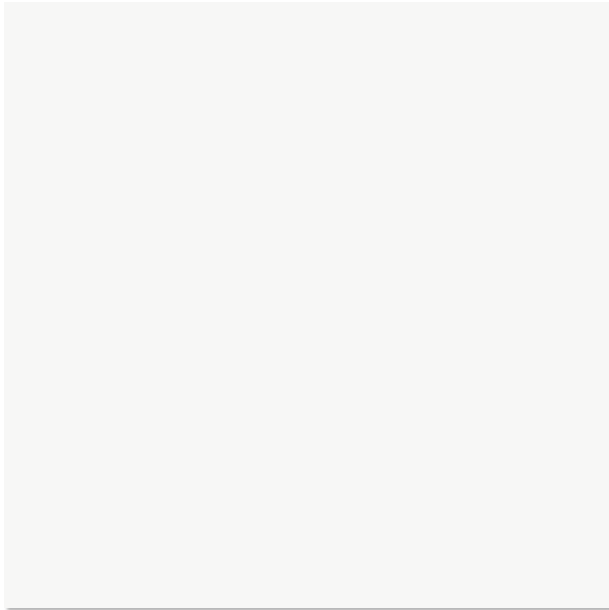
FULL BODY

80 X 80 cm vitrified tiles

IMPERIAL - SATIN FINISH



IMPERIAL IVORY



IMPERIAL BIANCO



IMPERIAL IVORY



IMPERIAL YELLOW

FULL BODY

80 X 80 cm vitrified tiles

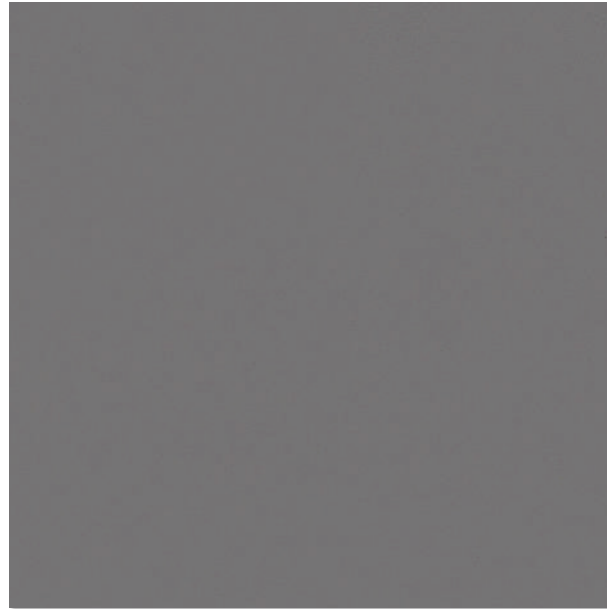
IMPERIAL - SATIN FINISH



IMPERIAL AZULE



IMPERIAL AZULE



IMPERIAL ASH GREY



IMPERIAL DARK GREY

FULL BODY

80 X 80 cm vitrified tiles

IMPERIAL - SATIN FINISH

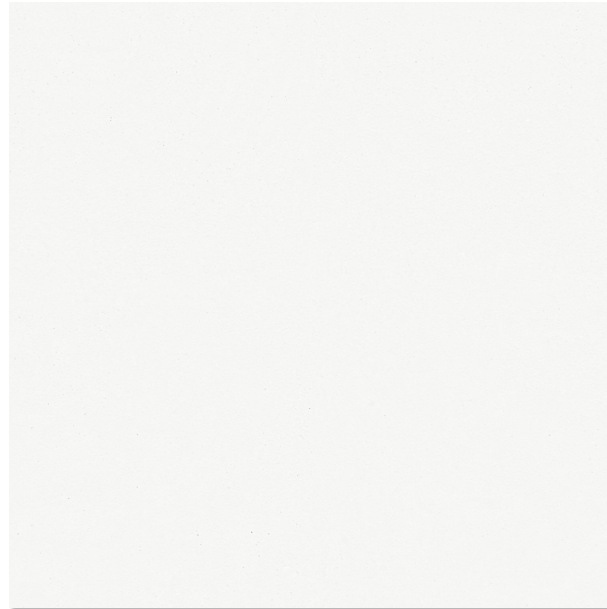
SCOTTISH - POLISH FINISH



IMPERIAL CHOCO



IMPERIAL CHOCO



SCOTTISH BIANCO



SCOTTISH IVORY

FULL BODY

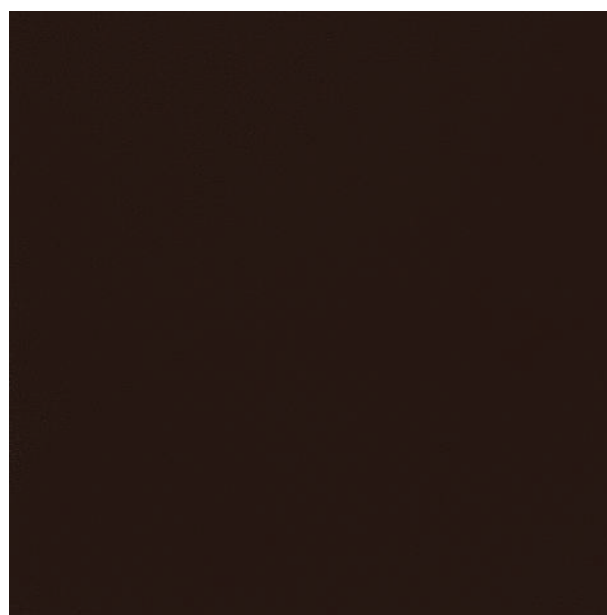
80 X 80 cm vitrified tiles

SCOTTISH - POLISH FINISH

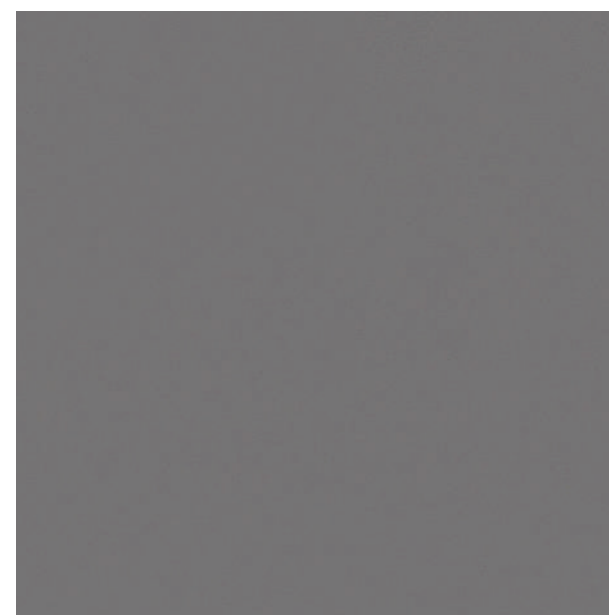
STALLION - SATIN FINISH



SCOTTISH YELLOW



SCOTTISH CHOCO



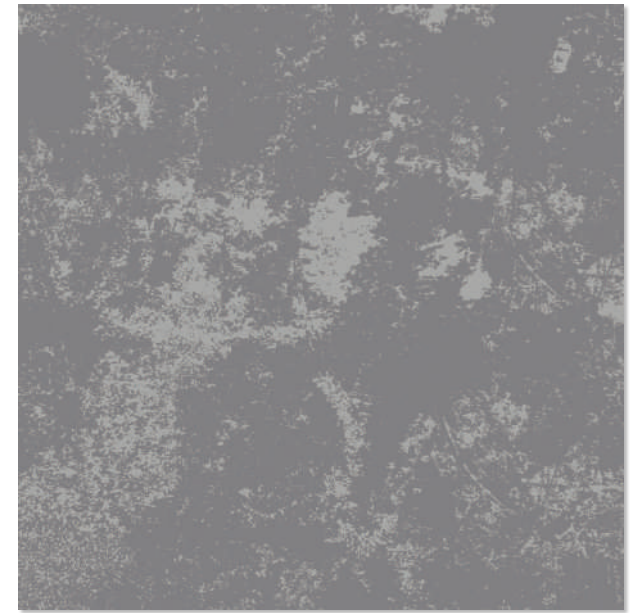
SCOTTISH ASH GREY



SCOTTISH DARK GREY



SCOTTISH AZUL



STALLION ASH GREY CLOUDY

FULL BODY

80 X 80 cm vitrified tiles

STALLION - SATIN FINISH



STALLION AZULE CLOUDY



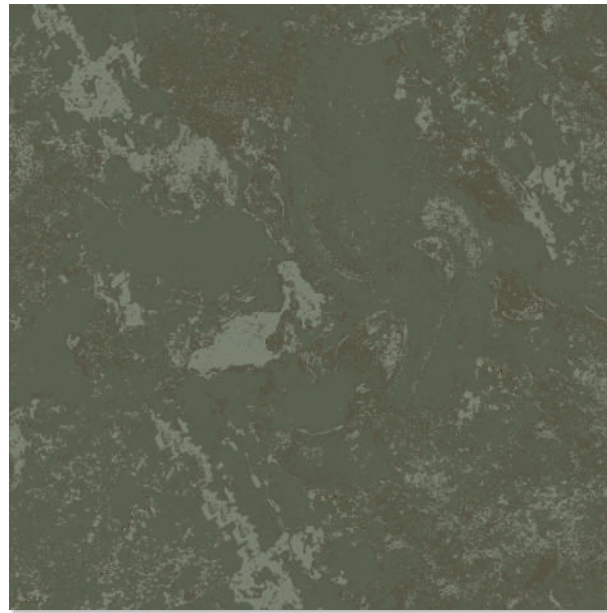
STALLION CHOCO CLOUDY



STALLION DARK GREY CLOUDY



STALLION IVORY CLOUDY



STALLION VERDE CLOUDY



STALLION YELLOW CLOUDY





élite

60x60 cm

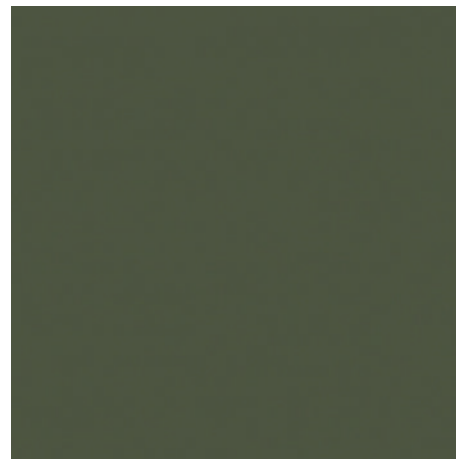
FULL BODY

60 X 60 cm vitrified tiles

IMPERIAL - SATIN FINISH



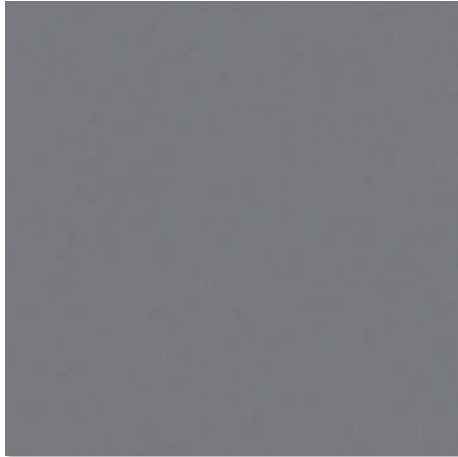
IMPERIAL YELLOW



IMPERIAL VERDE



IMPERIAL YELLOW



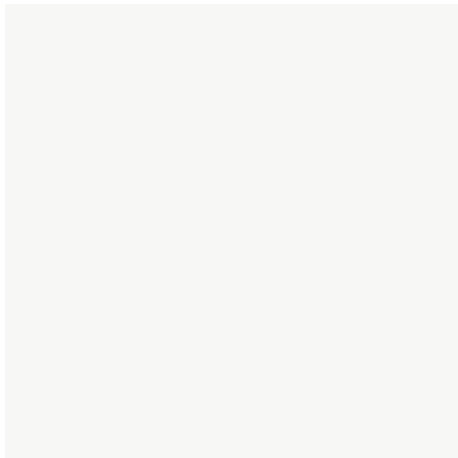
IMPERIAL AZULE



IMPERIAL DARK GREY



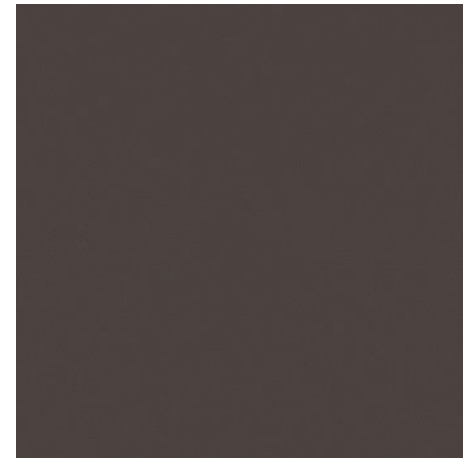
IMPERIAL CHOCO



IMPERIAL BIANCO



IMPERIAL ASH GREY



IMPERIAL GRIS

FULL BODY

60 X 60 cm vitrified tiles

SCOTTISH - POLISH FINISH



SCOTTISH VERDE



SCOTTISH VERDE



SCOTTISH YELLOW



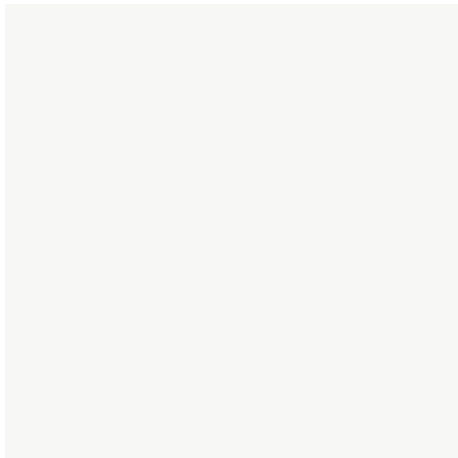
SCOTTISH AZULE



SCOTTISH DARK GREY



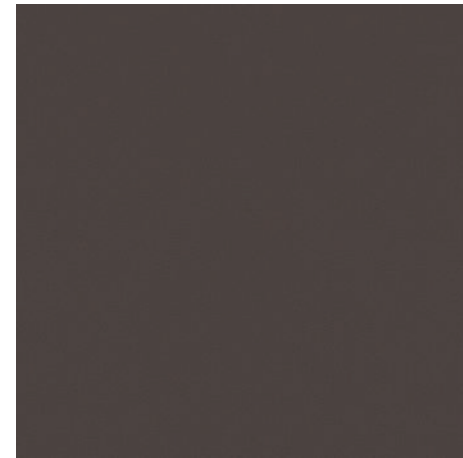
SCOTTISH CHOCO



SCOTTISH BIANCO



SCOTTISH ASH GREY



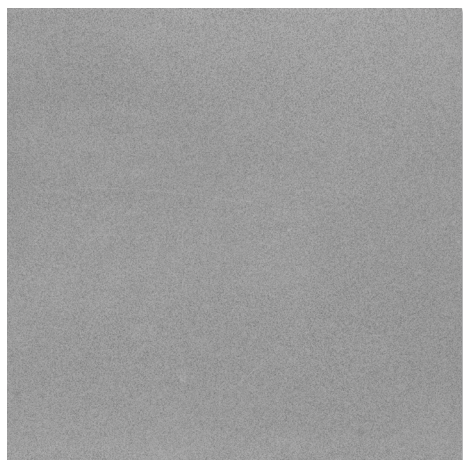
SCOTTISH GRIS

SALT & PEPPER

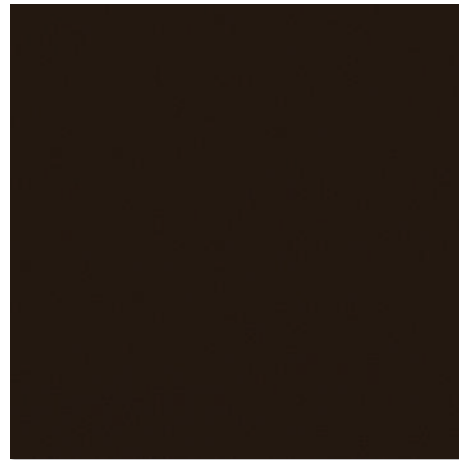
60 X 60 cm vitrified tiles

IMPERIAL - SATIN FINISH

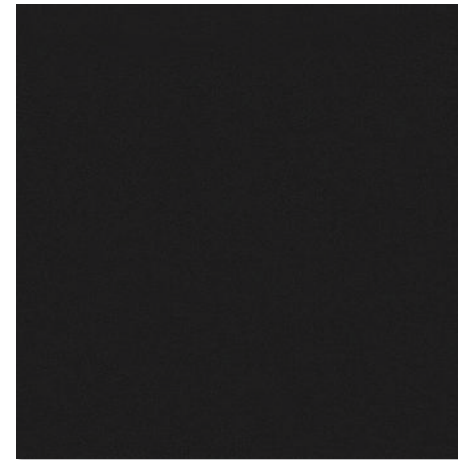
SCOTTISH - POLISH FINISH



IMPERIAL PLUTO



IMPERIAL CHOCO



IMPERIAL NERO



IMPERIAL GRIS



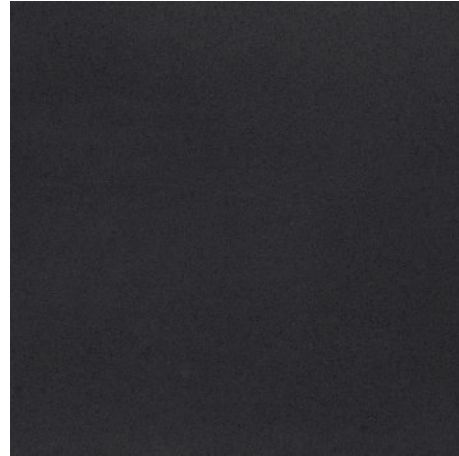
IMPERIAL BIANCO



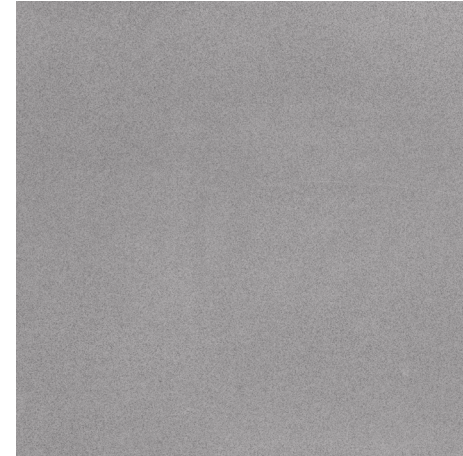
SCOTTISH YELLOW



SCOTTISH GRIS



SCOTTISH CARLO



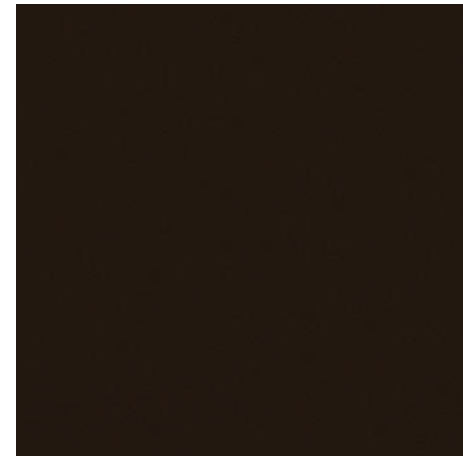
SCOTTISH PLUTO



SCOTTISH NERO



SCOTTISH BIANCO



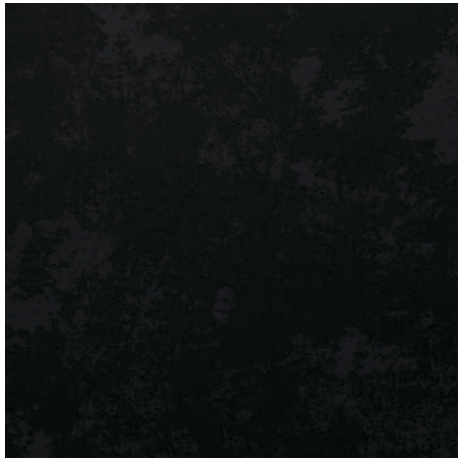
SCOTTISH CHOCO

SALT & PEPPER

60 X 60 cm vitrified tiles

SCOTTISH - POLISH FINISH

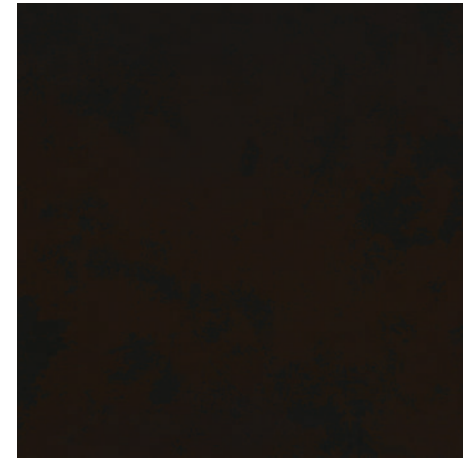
STALLION - SATIN FINISH



STALLION NERO CLOUDY



STALLION CARLO CLOUDY



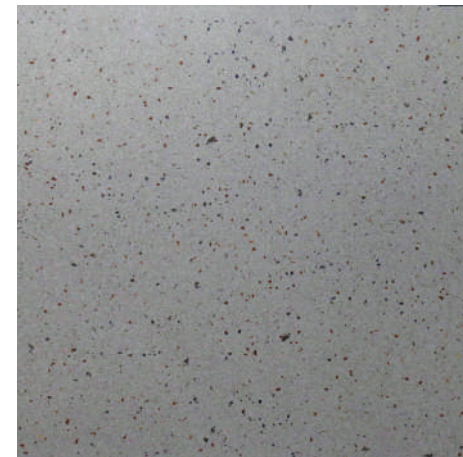
STALLION CHOCO CLOUDY



SCOTTISH GREEN CHILLY



SCOTTISH RED CHILLY



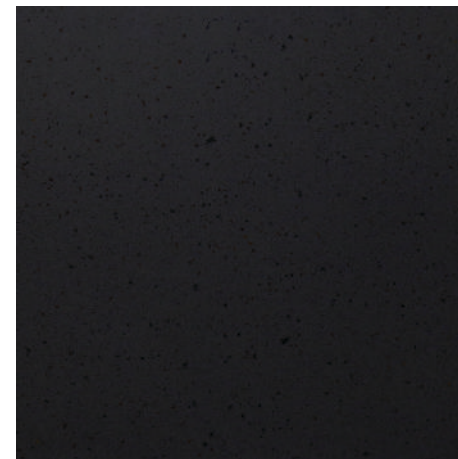
STALLION PLUTO CRYSTAL



STALLION PLUTO CLOUDY

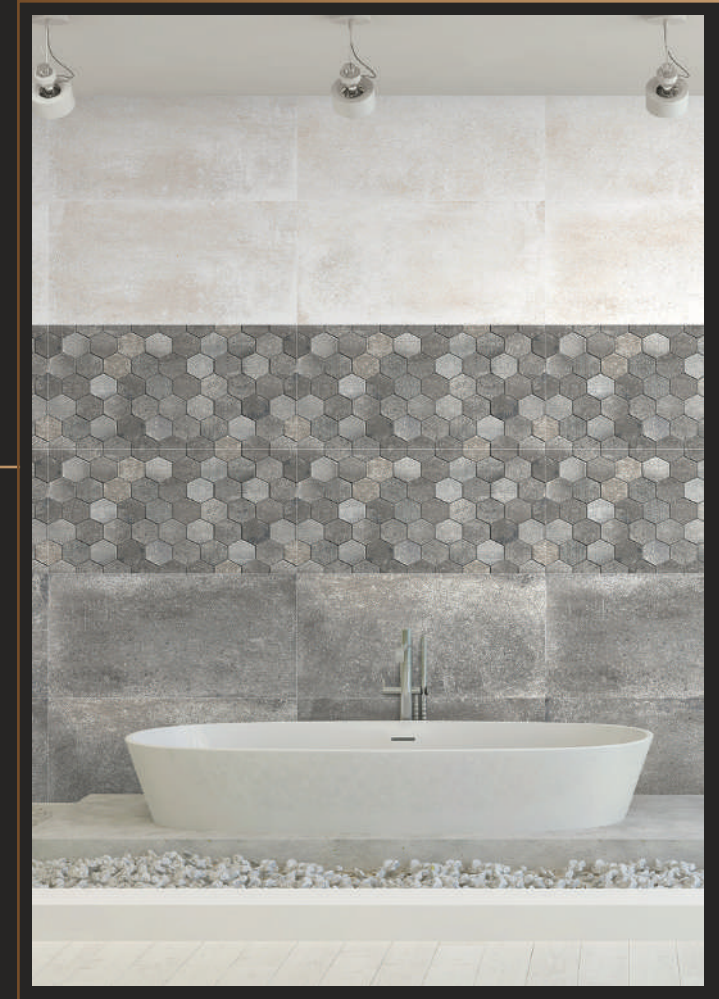


STALLION GRIS CLOUDY



STALLION CARLO CRYSTAL

Johnson Tiles offer a wide variety of ceramic glazed wall and floor tiles. Some of the trend-setting innovations we have launched in Johnson Tiles include Anti-skid Bathroom Tiles, Water-Repellent Tiles, Joint-Free Tiles, Scratch-Free Tiles, Germ-Free Tiles, 3D digital tiles, Neo Digital Tiles etc.





The ultimate expression of art in your home

Create a luxurious sanctuary within your home by adding the exclusivity and modernism of art in its purest form with Johnson Porselano, a new range of authentic porcelain tiles designed especially for your walls and floors.



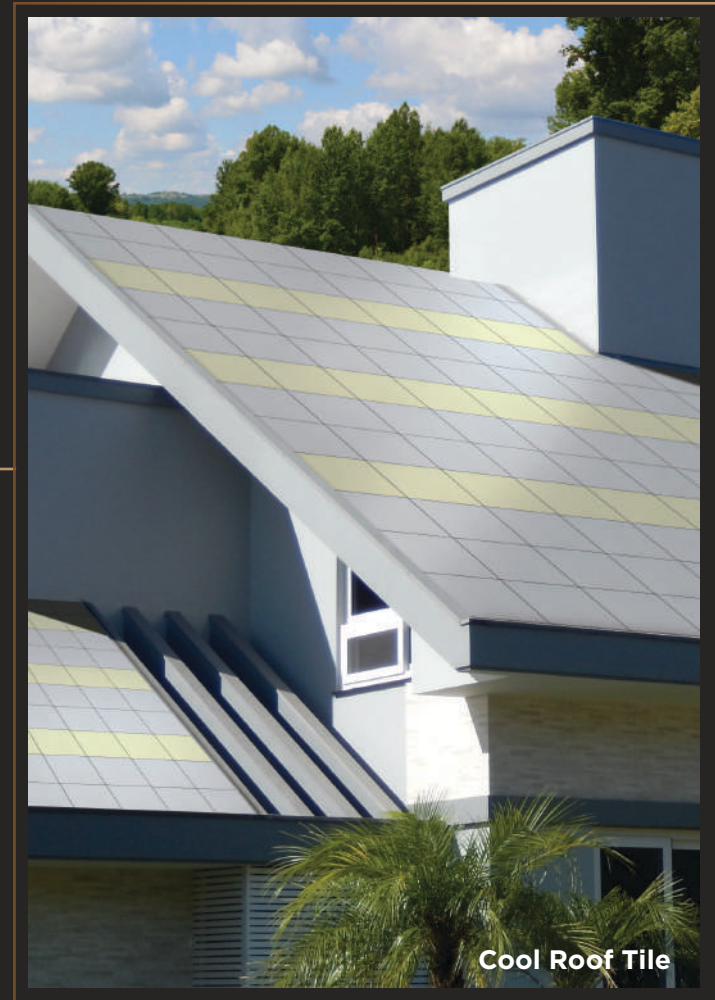


Johnson Endura is the only specialised brand in India offering speciality tiles for industrial premises & outdoor usage.

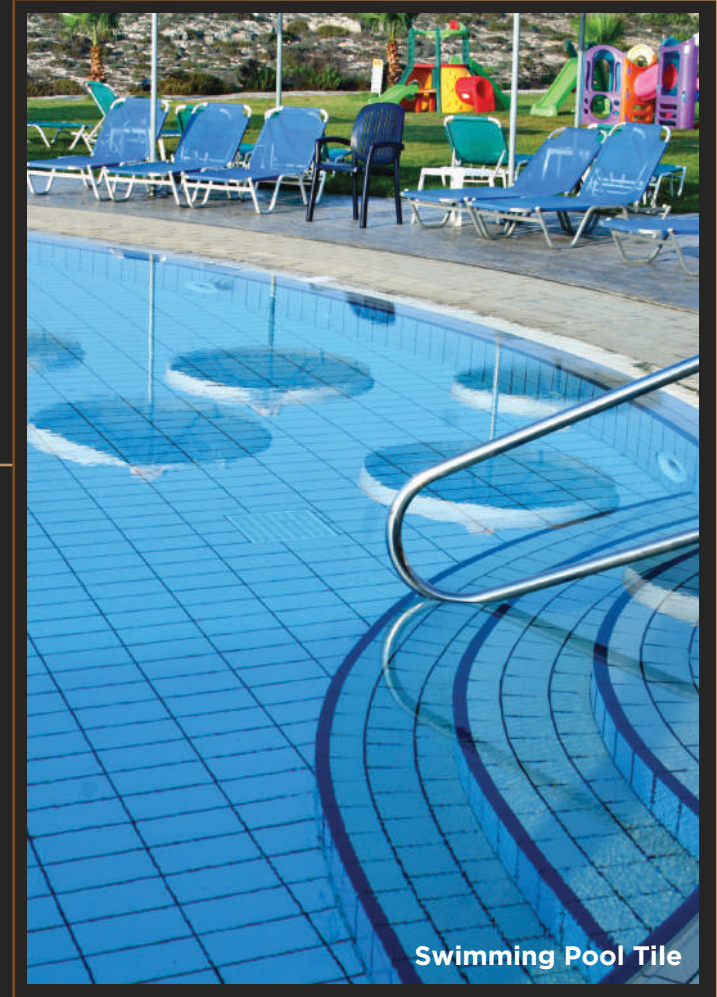
These offerings include unique solutions for high traffic areas, swimming pools, cool roof, clad tiles, step tiles, tiles with anti-static benefits etc.,
We also have tiles for the visually impaired.



Industrial Tile



Cool Roof Tile



Johnson offers a comprehensive range of bathroom solutions covering Sanitaryware, Bath Fittings, Bath Cabinets & Wellness Products i.e. bathtubs, shower panels, shower cubicles etc.,

Johnson also offers a range of sanitaryware with the unique anti-bacterial property. Johnson's Germ Free sanitaryware is an ultimate outcome of the breakthrough Silver Nano technology that helps keep bathrooms cleaner & hygienic.





Johnson Engineered Marble and Quartz products are impervious, non-porous and homogeneous and are suitable for virtually any interior application.

Flooring, wall and pillar cladding, countertops, vanity tops, stair treads, risers, etc., available in large formats of 10 ft x 4 ft. These slabs can be fabricated and installed in ways that are not possible with delicate natural marble. They can be supplied in the form of slab, tiles or special formats.





Technical Specifications

S.No	Property	International Standard ISO 13006 / EN 14411 Group Bla Requirement	Indian Standard IS 15622:2017 Group Bla Requirement	JOHNSON MARBONITE Value	
	Dimensions & Surface Quality		Rectified edge		
1	Deviation in Length & Width	± 0.6% or ±2.0mm	± 0.1 %	± 0.1%	ISO 10545-2 / IS 13630-1
2	Deviation in Thickness	± 5% or ±0.5mm	± 5 %	± 4%	ISO 10545-2 / IS 13630-1
3	Straightness of Sides	± 0.5% or ±1.5mm	± 0.1 %	± 0.1%	ISO 10545-2 / IS 13630-1
4	Rectangularity	± 0.5% or ±2.0mm	± 0.1 %	± 0.1%	ISO 10545-2 / IS 13630-1
5	Surface Flatness (Edge Curvature, Centre Curvature & Warpage)	± 0.5% or ±2.0mm	± 0.5 %	± 0.15%	ISO 10545-2 / IS 13630-1
6	Surface Quality	Min 95% free from visible defects	Min 95% free from visible defects	>95% free from visible defects	ISO 10545-2 / IS 13630-1
	Physical Property				
7	Water Absorption	≤ 0.5%	Average ≤ 0.08%, Individual Max 0.1%	≤ 0.05%	ISO 10545-3/ IS 13630-2
8	Modulus of Rupture	≥ 35 N/mm ²	Average 35 N/mm ² , Individual 32N/mm ² , Min	≥ 38N/mm ²	ISO 10545-4/ IS 13630-6
9	Breaking Strength	≥ 1300 N	Min 1300 N	≥ 1500 N	ISO 10545-4 / IS 13630-6
10	Moisture expansion	report value	0.2 mm/m, Max	≤ 0.2 mm/m	ISO 10545-10 / IS 13630-3
11	Scratch hardness of surface (Moh's scale)	Not Required	5, Min	≥ 5	IS 13630 -13
12	Coefficient of Linear Thermal Expansion	report value	Max, $6 \times 10^{-6} \text{ K}^{-1}$	≤ $6 \times 10^{-6} \text{ K}^{-1}$	ISO 10545-8/ IS 13630-4
13	Thermal Shock Resistance	report result	10 cycles Min	No Damage	ISO 10545-9 / IS 13630 -5
14	Impact Resistance	report value	0.55, Min	≥ 0.55	ISO 10545-5 / IS 13630-14
15	Slip Resistance for Floor Application	report value	Manufacturer to declare	≥ 0.4	ANSI B101.3
16	Frost Resistance	report result	required if requested by purchaser	No Damage	ISO 10545-12 / IS 13630-10
17	Resistance to Deep Abrasion of Unglazed Tiles	≤ 175 mm ³	Max 140 mm ³	≤ 140mm ³	ISO 10545-6 / IS 13630-12
18	Bulk Density (g/cc)	report value	2.2, Min	≥ 2.2	ISO 10545-3 / IS 13630-2
19	Color Resistance to UV light	report result	-	No change in color	DIN 51094
20	Chemical Property (cleansers except to cleansing agents containg Hydrofloric acids and its compounds)				
a	Resistance to Staining - Unglazed Tiles	report resistance class	Class 2, Min	Class 3 (ISO) / Class 2 (BIS)	ISO 10545-14 / IS 13630-7
b	Resistance to Household Chemicals and Swimming Pool water cleansers - Unglazed tiles	UB	report resistance class	UA	ISO 10545-13 / IS 13630-7
c	Resistance to acids and alkalis (Unglazed Tiles)	report resistance class	report resistance class	UA	ISO 10545-13 / IS 13630 -7

* ISO / IS technical specifications for Johnson tiles are applicable only for premium /1st Quality tile
Please inspect all tiles prior to insallation, company will not entertaining complaints once tiles are laid / fixed

Packaging Details

Product	Nominal Size (cm)	No. of Tiles / Box	Approx Area / Box (sq m)	Approx Weight / Box (kgs)	Approx Cartons / 20' Container	Approx Area per Container (sq m)
Marbonite 120x60	120x60	2	1.44	27.5	981	1413
Marbonite 80x80	80x80	3	1.92	37.5	720	1382
Marbonite 60x60	60x60	4	1.44	27.5	981	1413

Exclusive Company Experience Centres

Branch	Address	Tel.:
Coimbatore	Elysium Towers, Park Gate Road, ATT Colony, Gopalapuram, Coimbatore 641018	0422 4382698 / 8754446412
Guwahati	1'st Floor, Above Royal Riders Honda, Near Rahul Kata, Pub Bragaon, Garchuk, Guwahati - 781035	7604092937
Chennai	82, 84 & 86 Bascon Maeru, 1st Floor, Kodambakkam High Road, Nungambakkam, Chennai - 600034	9080545851 / 9445390095
Kolkata	83 JBS Haldane Avenue, TOPSIA Trinity Towers Kolkata - 700046	9073974324
Cochin	Door No. 11/30 Of, Next to VTJ Hyundai, NH 47 Kudanoor, Maradu, Ernakulam 682304	7034024075
Raipur	2nd Floor, MM Silver Plaza, Opp Udyog Bhawan, Ring Road 1, Raipur, Chattisgarh 492001.	7209207925
Ahmedabad	F 106 - 107, Shivalik Plaza, IIM Road, Panjrapole Cross Road, Ahmedabad, Gujarat 380015	9974228833
Calicut	Survey No. 279/32, 279/33, Malaparamba Bypass, Kudilthod, Calicut - 673 002.	0495 2702505 / 2301474
Bhubaneshwar	229/5332, Gautam Nagar, Bhubaneshwar 751014	8249684001
Thane	Shop No.5, Gr.Floor, Cosmos Jewels, Near Dmart, Anand Nagar, Ghodbunder Road, Thane (W) - 400615.	8424003247
Lucknow	1st Floor, Plot No CP-4, Vijayant Khand 3, Gomtinagar Yojna, Lucknow - 226010.	7678994411
Chandigarh	SCO 214 sector14, Panchkula, Haryana 134109.	0172 4691000
Indore	Shop No. 5, 6, 7 and 8, Upper Ground Floor, Exotica, Shalimar Township, Village Niranjapur, A.B. Road, Indore (M.P) 452001	9575764767

You can also reach us at

Region	Branch	Tel.:
EAST	West Bengal (Kolkata) Orissa (Bhubaneshwar) Ranchi	033-22272128/29 0674-6539836/6539837 9798845560
WEST	Mumbai - Bandra to Dahanu Mumbai - Central Thane to Raigad Pune Ahmedabad Indore	022 - 30647500/26547300 022 - 30647500/26547300 022 - 30246600 020-41301164/31/61/63 079-30072051/52/53/54/55 0731-4007441
NORTH	Jalandhar Chandigarh Delhi Jaipur Ghaziabad Lucknow Patna	01824-505038/39 0172 - 4697100 / 4656940 011-49526600 0141-2333922 0120-4110377 0522- 4025128/4065471/4026028 0612-2254252
SOUTH	Bangalore Hyderabad Vijayawada Vishakapatnam Tirupathi Chennai Coimbatore Salem Madurai Tuticorin Trichy Ernakulam Calicut Trivandrum	080-25446841/42/43/46 040-29802270/71/72 0866-2543616/17 0891-2796376 0877-3254151 044-28544116/28541881 0422-2540501/2548439 0427-2280636/2280637/2280639 0452-4355584/4355594 0461-2271558/2278585 0431-2904730/40/50 0484-4098500/509/510 0495-2702505/2301474 0471-2551141

For address and contact numbers of our Johnson Exclusive Showrooms and Authorized Retailers, please visit our website www.hrjinida.com



PRISM JOHNSON LIMITED

(FORMERLY PRISM CEMENT LIMITED)

Toll Free No.: 1800-22-7484 **E-mail:** tiles.customercare@prismjohnson.in
For Export Enquiries, **Email:** exports.customercare@prismjohnson.in

H & R JOHNSON (INDIA) DIVISION

Corporate Office: 7th Floor, Windsor, C. S. T. Road, Kalina, Santacruz (East),
Mumbai - 400 098, India.

Tel.: +91-22-3064 7300 / 2654 7300 Fax: +91-22-3064 7400 Website: www.hrjindia.com
Export Website: www.prismtiles.com

Registered Office: 305, Laxmi Niwas Apartments, Ameerpet, Hyderabad - 500016,
Telangana, India.

Colours shown are as accurate as the limitations of the printing process will allow. Prospective customers are advised to inspect a sample of the tile before ordering. Every effort has been made to ensure accuracy of the information given. However, the Company reserves the right to change the specifications without prior notice. Sometimes, variations in shade or size may occur which is inherent to the ceramic industry. Before fixing the tiles, we urge you to read and follow the fixing instructions given on the carton box of the tiles. The Company will not take responsibility and will not accept any complaints of shade, size or planarity once the tiles have been fixed. Although every effort has been made to ascertain that all the information provided in this brochure is accurate before printing, errors may still happen. Please contact the local branch office for updated information before placing orders. The information contained in this catalogue is given in good faith. The Company takes no liability on account of any loss or damage either consequential or otherwise as a result of the information provided therein.



Scan this QR code
to view our videos



Scan this QR code to download
Android version app



Scan this QR code to download
iOS version app

